

Us in a nutshell

After-school childcare service offering supervised care and activities from 3pm - 6.30pm throughout term time for children aged 4-11years. We collect from some schools, please ask about specifics.

Some of the activities we offer

- Structured educational based games
- Sports
- Arts & Crafts
- Gardening activities
- Dance
- Theatre
- Cooking
- Board Games
- Construction
- Messy play
- Reading
- Homework help

What makes us different?

Play in Dore is run by a Highly qualified childcare professional with over 12 years experience and a very strong belief in learning through play, allowing for a deeper and fulfilling learning experience and a pride in self discovery.

For your piece of mind

We are:

OFSTED regulated

First Aid trained

DBS certified

Play in Dore

Our Ethos

Our Club follows the Play Work Principles, so the children are free to choose activities and resources as they wish. There will always be a selection of activities and resources available, including dressing up, theatre stage, arts & crafts, board games, construction, physical play, cookery, sports, messy play and reading. There will be no games consoles.

Ensuring your child receives quality care is vital to all parents, so whether you are looking for after school care or school holiday cover, you want your child to be safe and happy. Your child will also have fun, meet new friends and have plenty of opportunities to develop physically, mentally and socially.

Parents can have peace of mind knowing that their children are well cared for and engaged in safe, healthy activities after school. Children are also provided with a healthy and satisfying snack and meal. Activities are planned to help children learn, play and relax with their friends.

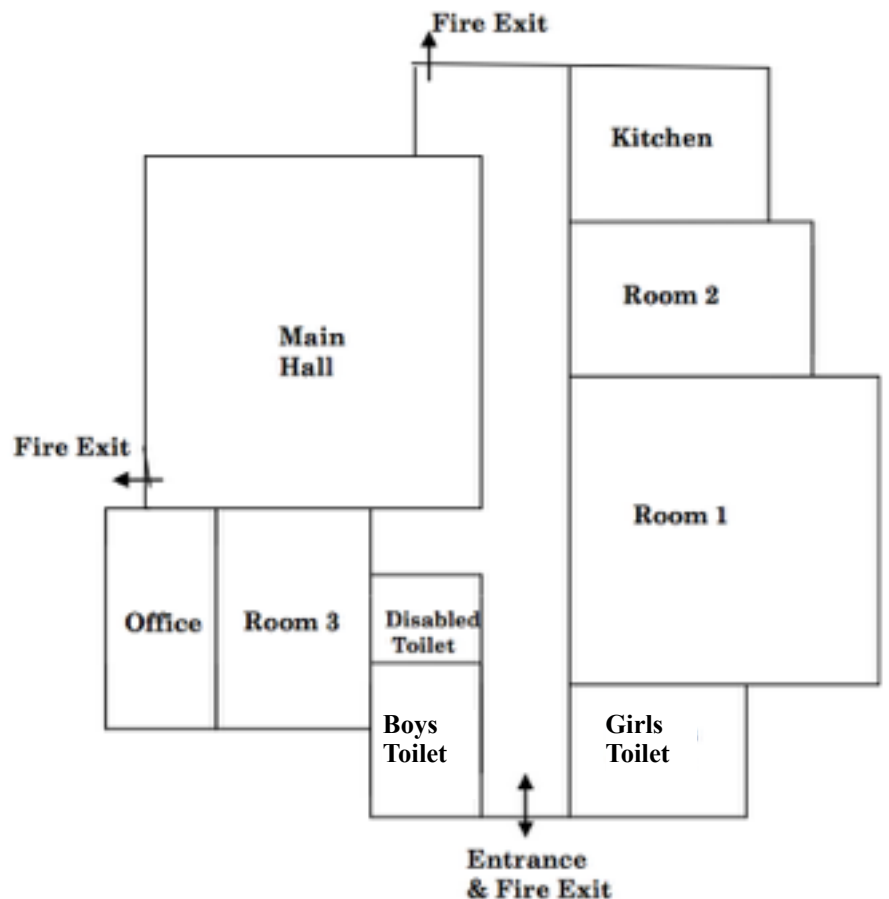
We believe in going the extra mile, expanding on your child's ideas and ensuring that their views and opinions count.

Play in Dore

Venue



The after school club is based at Toley Rise Methodist Church Community Hall. There is ample space including a main hall with stage and an outdoor play area and garden for children to discover and explore.



Walking Bus

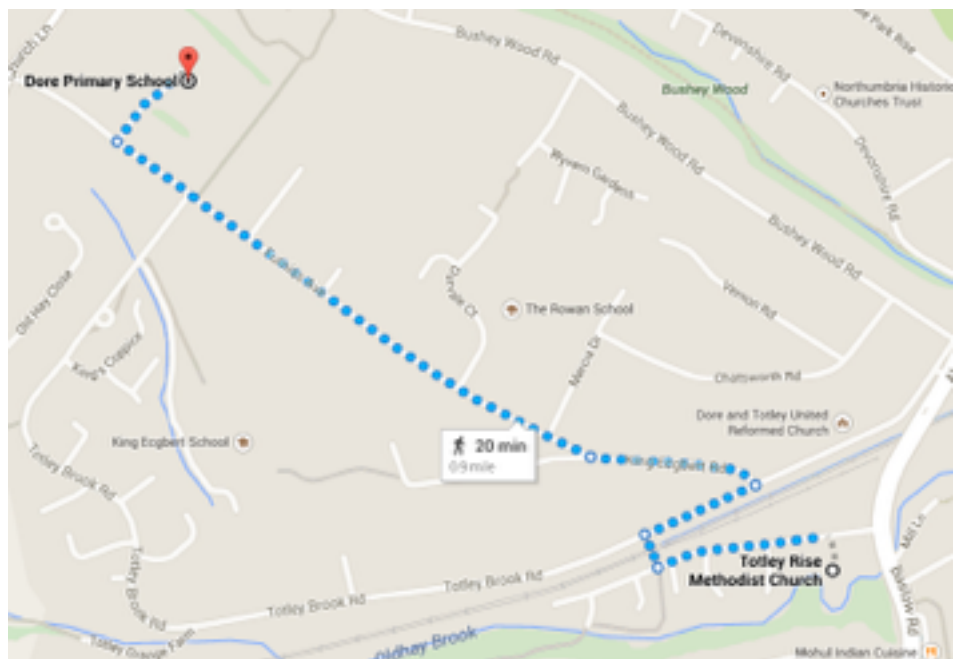
How do we get from Dore Primary School to the Play in Dore venue?

Simple - a 15 minute walking bus.

- It helps children achieve the recommended 60 minutes of physical activity a day.
- Promote safety awareness of roads and environmental hazards.
- It promoted a safe, non-polluting and sustainable transport alternative to cars and buses
- It helps foster a sense of community as families get to know each other, and their children become friends.
- Encourage physical activity by teaching children the skills to walk safely, how to identify safe routes to school, and the benefits of walking

A risk assessment has been put in place to ensure the safety of the children. All factors have been considered and accounted.

A reflective safety jacket is provided for all children and where necessary a waterproof poncho also.



Food

Each day your child will be provided with a healthy snack on arrival at Play in Dore.

Such as:

- Rice cakes / bread sticks / crackers
- Fresh fruit
- Fresh vegetable crudete

Before heading home to you we shall also have provided your child with a nutritious light meal.

- Sandwiches (chicken, ham, cheese, tuna)
- Pitta breads
- Bread cakes
- Ciabattas
- Baguettes
- Puddings such as fresh fruit, yoghurt and sugar free jelly

Fresh water and milk will be available at all times.

We will try to meet individual dietary requirements and parental preferences wherever possible.

Play in Dore

Staff

Play in Dore is staffed by the owner Niala Haq and suitable play workers.

All staff are DBS checked, have significant experience of working with children and undertake professional development training. We maintain a staff/child ratio of 1:8 for children under the age of eight, and a ratio of 1:10 for children over the age of 8.

Prices

Fees are charged per session and there are two options available:

- School pick up - 5pm - £10
- School pick up - 6.30pm - £13

10% discount available to sibling bookings and for full-time place is bookings.

This is **payable in advance** by cash or cheque, bank transfer or childcare vouchers. Cheques should be made payable to "Play in Dore Ltd".

The price per session per child applies to all children. Days off will be charged at a 50% discount providing that 1 months notice is given. In the event of child sickness, severe weather conditions, school closure or failure to provide 1 months notice, your full normal rate will still be charged.

We do not charge for bank holidays and professional training days. Please ensure that fees are paid promptly. Non-payment for more than one month may result in your place being terminated. If you are having difficulty paying fees, please speak in confidence to the Manager

Play in Dore

Contact Information

Play in Dore

Totley Rise Methodist Church

1 Grove Road

Totley Rise

Sheffield

S17 4DJ

Phone Number - 07592112520

Niala Haq

Special Education Needs Co-ordinator

Equalities and Inclusion Co-ordinator, Health and Safety Officer

Fire Safety Officer, First Aid Co-ordinator, EYFS Key Person

EYFS Key Person, Child Protection Officer



Play in Dore

Holiday Club

Holiday Club is an additional service offered by Play in Dore to provide childcare cover throughout school holidays. This is open to children from any school who are of school age.

For this service we are based at King Egbert School in the 6th form hub. The Hub provides a lounge area for the children, structured games/activities ,role-play and to have a chill out time.

We also have access to the large dining area which will be our creativity room, allowing children to use their imagination and get messy. We will be providing a variety of creative opportunities for children to experience. It will also be a meal time area for children to have their meals/snacks.

Throughout the holidays we will be taking advantage of the great outdoor facilities ranging from tennis courts basket ball courts ,football pitch ,large play field and sports/gymnastic hall. All giving great opportunities to promote healthy living and fitness.

For more information regarding the holiday club please contact Niala Haq



Play in Dore

Terms & Conditions

Organisation

Play in Dore is run as a private business, employing two/three staff. We enjoy a close working relationship with the local schools in order to ensure continuity of care, and to maintain good communication links.

Policies and procedures

The Club has clearly defined policies and procedures. Key points of the main policies are included in this Handbook. Copies of the full policies are kept at the Club and are available for parents to consult at all times.

Admission

Our Club aims to be accessible to children and families from all sections of our local community. Admission to the club is organised by the Manager and we use a waiting list system when the need arises. The waiting list will be operated on a first come-first served basis, with the exception of siblings who will have priority for the same days as a sibling already attending. See our **Admission and Fees Policy** for more details.

We require a completed set of registration forms for your child before they can attend the club. This information will be treated as confidential and will be stored appropriately.

Re-enrolment for September is required at the end of the summer term. We cannot keep a place open for your child unless you complete a new registration form.

Payment of fees

The current fees for the After school club are **£10.00 (School finish - 5pm) or £13.00 (School finish - 6.30pm)** per child per session .The current fees for the Holiday club are £25.00 per child per session(8:00-6:00). Fees are payable in advance by cash or cheque, bank transfer or childcare vouchers. We accept vouchers schemes . Cheques should be made payable to "Play in Dore Ltd".

The price per session per child applies to all children. This is payable for all booked sessions including when your child is sick, or on holiday (unless 1 months notice is given, in which case a 50% discount will be given)

We do not charge for bank holidays and professional training days.

Please ensure that fees are paid promptly. Non-payment for more than one month may result in your place being terminated. If you are having difficulty paying fees, please speak in confidence to the Manager.

Play in Dore

Changes to days and cancelling your place

You must give us one month's notice of termination, or of changes in attendance. If you need to change the days that your child attends, please contact the Manager. We try to accommodate such changes wherever possible.

Temporary changes

Please remember that we need to know if your child will not be attending the Club for any reason. Even if you have informed your child's school, you still need to notify us as the school does not automatically pass this information on to us. If your child doesn't attend a booked session, we will have to treat them as a 'missing child' unless you have notified us of their absence.

If you know in advance of any days when your child will not be attending during the following week, please try to let the Manager know by THURSDAY at the latest. Please note that unless 1 months notice is given you will be charged your full usual rate. 1 months notice will provide you a 50% discount. In cases of illness or emergency when notice cannot be given, please call as soon as you can. Contact details can be found at the end of this Handbook.

Induction

You and your child are welcome to visit the Club before your child's first day, to familiarise yourselves with the setting and to help your child settle in.

During your child's first session time will be set aside for an induction. The induction will include running through Club's rules and routines (including meal times, collection, children's meetings), and introducing your child the staff and other children.

Another child will usually be allocated to act as your child's buddy for the first few sessions.

See our **Child Induction Policy** for more details.

Arrivals and departures

Our staff collect children from the designated school and escort them to the Club. A register is taken when children arrive in our care, and you must sign out your child each day when you collect them.

We expect that your child will normally be collected by the people you have named on the registration form. If you need a different person to collect your child on a particular day, you must notify us in advance. We will not release your child into the care of a person unknown to us without your authorisation.

See our **Arrivals and Departures Policy** for more details.

The club finishes at 6:30 pm, if you are delayed for any reason please telephone the Club to let us know. A late payment fee of £5.00 per 15 minutes will be charged if you collect your child after the Club has closed. You may also be asked to make a contribution towards any extra staff wages and transport costs incurred.

If your child remains uncollected after 7:00 pm 30 minutes after the club closes, and you have not warned us that you will be delayed, and we have been unable to reach you or any of your emergency contacts, we will follow our **Uncollected Children Policy** and contact the Social Care team.

Child protection

We are committed to building a 'culture of safety' in which the children in our care are protected from abuse and harm. Any suspicion of abuse is promptly and appropriately responded to. We comply with local and national child protection procedures and ensure that all staff are appropriately trained. For more details see our **Safeguarding Policy**.

Equal opportunities

Our Club provides a safe and caring environment, free from discrimination, for everyone in our community including children with additional needs.

- We respect the different racial origins, religions, cultures and languages in a multi-ethnic society so that each child is valued as an individual without racial or gender stereotyping.
- We will challenge inappropriate attitudes and practices
- We will not tolerate any form of racial harassment.

Special need

We make every effort to accommodate and welcome any child with special needs. We will work in liaison with parents or carers and relevant professionals to fully understand your child's specific requirements. We will endeavour to accommodate all children of all abilities, whilst working within the Club's limitations. Each case will be considered individually and risk-assessed to ensure everyone's safety.

Our staff training programme includes specific elements relating to children with special needs.

For more details on equal opportunities and special needs, see our **Equalities Policy**.



Play in Dore

General information

Behaviour (children)

Children and staff have created rules for acceptable behaviour whilst at the Club. These are displayed at the Club for everyone to see.

We have a clear **Behaviour Management Policy**, a copy of which is distributed to all parents and carers:

The Club promotes an atmosphere of care, consideration and respect for everyone attending: children, staff and visitors.

We encourage appropriate behaviour through: praise for good behaviour; emphasis on co-operative play and sharing; talking to children with the courtesy that we expect from them and engaging children in activities

The Club has procedures for dealing with unacceptable behaviour. We recognise that poor behaviour can occur from time to time for reasons that are not always evident, or as a result of special needs. We will try to be flexible in order to accommodate such cases.

However, if your child is violent, or if their behaviour poses an immediate danger to themselves or others, we will require you to collect them from the Club immediately. In exceptional circumstances, and only when all other attempts at behaviour management have failed, we reserve the right to permanently exclude a child from the Club. See our **Suspensions and Exclusions Policy** for full details.

Behaviour (adults)

We will not tolerate from any person, whether a parent, carer or visitor: bullying; aggressive, confrontational or threatening behaviour; or behaviour intended to result in conflict. Our Club is a place of safety and security for the children who attend and the staff who work here, and we reserve the right to ban anyone exhibiting inappropriate behaviour from our premises. See our **Aggressive Behaviour Policy** for more details.

Illness

We are unable to care for children who are unwell. If your child becomes unwell whilst at the Club we will contact you and ask you to make arrangements for them to be collected.

Please inform the Manager of any infectious illness your child contracts. If your child has had sickness or diarrhoea please do not send him or her to the Club for 48 hours after the illness has ceased. See our **Illness and Accidents Policy** for more details.

Play in Dore

Accidents and first aid

Every precaution is taken to ensure the safety of the children at all times, and the Club is fully insured. Our staff are trained in first aid and a first aid kit is kept on the premises. If your child has an accident whilst in our care, you will be informed when you collect your child. For full details see our **Illness and Accidents Policy**.

Medication

Please let the Manager know if your child is taking prescribed medicine. If your child needs to take medicine whilst at the Club you will need to complete a **Permission to administer medication form** in advance. See our **Administering Medication Policy** for more details.

Complaints procedure

If you have any queries, comments or need to discuss any matters concerning your child, please feel free to speak your child's key person, the Manager, or any other member of staff.

Verbal complaints will be brought to the next staff meeting for discussion and action.

All written complaints will be acknowledged within five working days of receipt and a full written response will be given within 28 days.

A full copy of our **Complaints Policy** is available on request.



Play in Dore

Pledge to Parents

We value our relationship with parents/carers and are committed to working in partnership with you to provide top quality play and care for your children. We will:

- Welcome you at all times to discuss our work, have a chat or take part in our activities.
- Keep you informed of opening times, fees and charges, programmes of activities, menus, and procedures.
- Be consistent and reliable to enable you to plan with confidence and peace of mind.
- Share and discuss your child's achievements, experiences, progress, and friendships.
- Be available to discuss decisions about running the club.
- Ask your permission for outings and special events.
- Listen to your views and concerns to ensure that we continue to meet your needs.



Play in Dore



Play in Dore

